

Unyielding Quality, Service, and Value

Atropos Composite manufactures advanced fiberglass composite crossarms that replace toxic treated wood, delivering decades of maintenance-free performance and **long-term cost savings** for utility infrastructure.



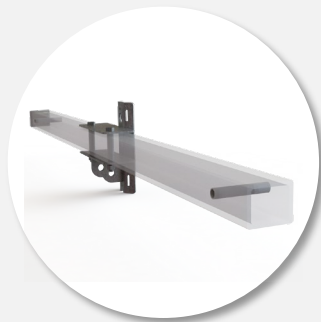
Save Install Time

- ✓ Your custom drill pattern + field drilling capability
- ✓ Pre-assembled mounting brackets and hardware
- ✓ Lightweight + strong material, easy to install in the field



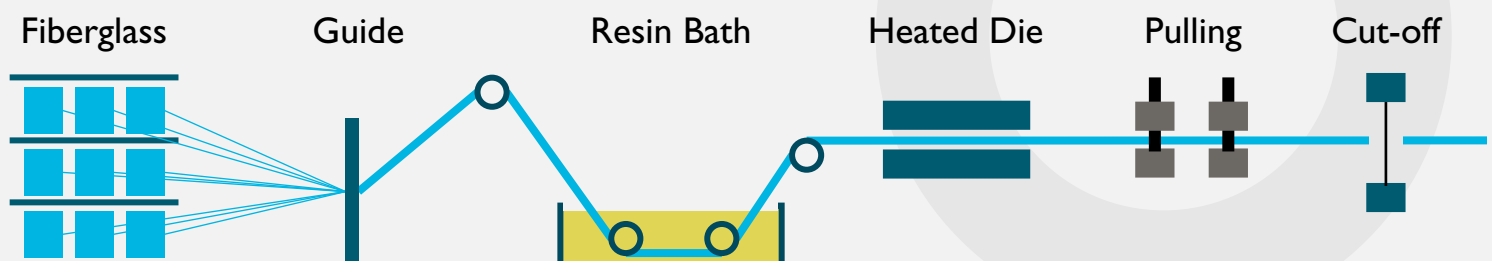
Maintenance-Free Performance

- ✓ No preservatives, minimum decay, cracking, or fiber bloom
- ✓ Foam-filled and secure endcap design keeps wildlife out
- ✓ UV-protected and fire-resistant for the toughest areas
- ✓ 3rd-party lab-tested results backing product performance and quality



Superior Lifetime Value

- ✓ 60+ years of expected lifespan, 3-4x longer than wood
- ✓ Reduced lifetime maintenance and replacement expenses
- ✓ Environmentally safe, 100% preservative-free, non-toxic



Save on shipping with premium-quality products pultruded and manufactured in St. Louis, Missouri.

Dielectric Insulation

Fiberglass crossarms ensure lines are electrically isolated

Foam Fill

Filled with closed-cell polyurethane foam to prevent wildlife infestation



Endcap

Fitted endcap interlocks with foam fill to ensure a precise and secure fit

Rigidity

Lower deflection than the competition at the same loads

UV Protection

Layered UV protection from embedded additives and a UV veil

Fire Resistant *

* Optional fire-resistant additive for special use cases

Crush Bushing

Internal bushings allow proper bolt torque while maintaining the composite structure

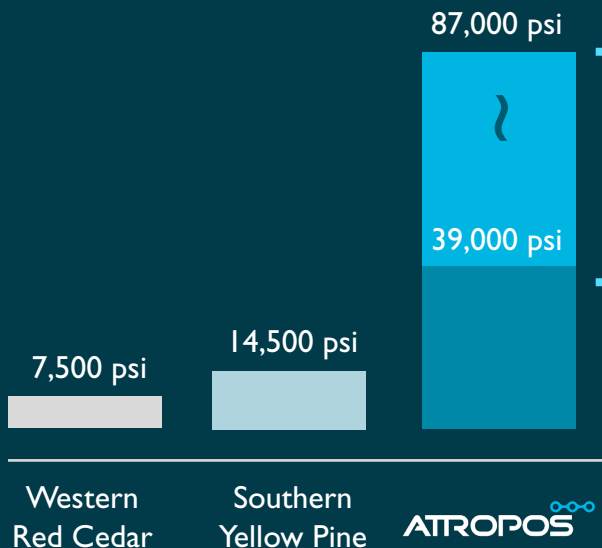


Learn more about how Atropos can help you save by visiting: www.atropos.build or scan code



Next Level Bending Stress

Harden your network with the next generation of engineered materials



Any Load | Any Deflection

Our product offering covers a wide range of applications, ensuring that your needs are met

3400 Series

3.625" X 4.625" outer dimensions

- 3401 – Light Duty
- 3402 – Standard Duty
- 3403 – Heavy Duty

4600 Series

4" X 6" outer dimensions

- 4603 – Severe Duty